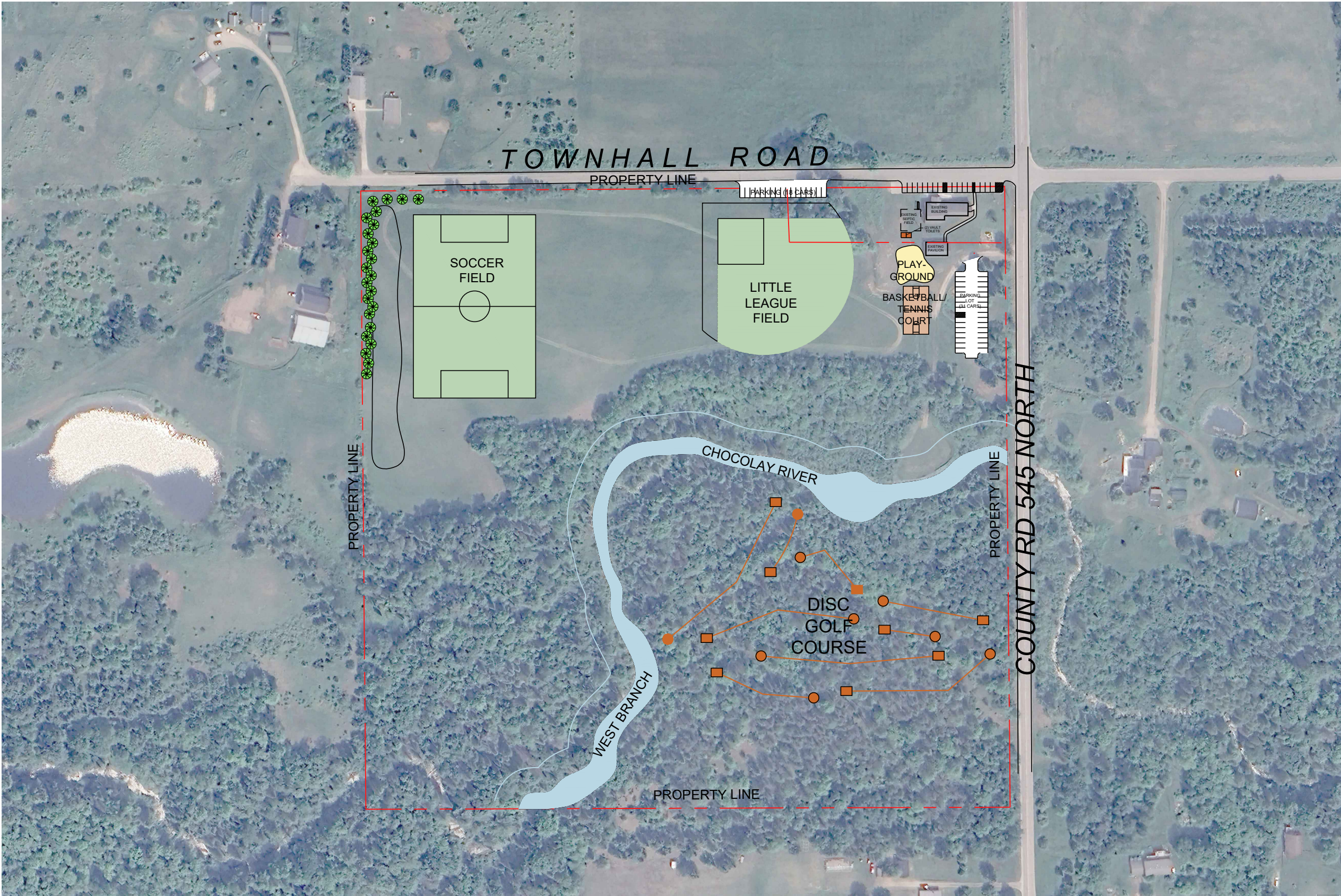


WEST BRANCH TOWNSHIP COMMUNITY RECREATION AREA

1016 COUNTY ROAD 545 N SKANDIA, MICHIGAN

SEPTEMBER 5th, 2024



OVERALL- SITE PLAN

SCALE: 1" = 200'-0"(APPROX.)



COPYRIGHT © 2024 BY BARRY J. POLZIN ARCHITECTS INC.
ALL RIGHTS RESERVED.